

Guajolotes, Zopilotes y Paisanos

Vol. 12 No. 3 Hillsboro Historical Society August 2019



**CROSSING THE BLACK RANGE
THROUGH THE CENTURIES**

BASEBALL IN HILLSBORO

PRESIDENT'S MESSAGE



Thanks to the HHS members and caring folks of Hillsboro, Kingston and surrounding neighbors, the Society has grown over the last year. Our success at fundraising and the donation of personal time to the museum and courthouse properties has been phenomenal! This insures that our place in history, and that the people and events that brought us into this century are acknowledged and honored.

We commonly hear from folks connected to Hillsboro, who have heard of the progress of the museum, and who become members, and donate money or place family artifacts into our care. With much pride and satisfaction, I relate the strides that we have made on our properties and acknowledge those that deserve recognition.

Many thanks to the Board of Directors who have guided us on several fronts. The board has brought the Black Range Museum from a musty and dilapidated building to a functional facility, capable of displaying rare artifacts appropriately and securely. The Courthouse and jail property has been cleaned and protected thanks to Gary Gritsbaugh, Jan Haley, Nichole Trushell, Steve Morgan, Linda King, and other volunteers. We have over half the funds needed for a protective pavilion over the jail to stabilize that historic structure. Our donors trust that we'll spend dollars according to their wishes, so we must insure that these funds are spent wisely. I believe that we have done this to the satisfaction of the membership.

I thank those volunteers who assisted with the cleaning and painting of the museum. Thanks also to the New Mexico Farm and Ranch Museum and the Silver City Museum for their support and guidance. Thanks to Bruce Cosper, Rand Berger and Jon Miller for their much needed assistance. Special thanks is extended to Garland Bills for his dedication to the renovation of the museum and his daily efforts toward its success. Thanks to the Black Range Lodge for sponsoring the HHS benefit concert, and to Black Range Vineyards for their donations resulting from this event.

The Black Range Museum is almost ready to reopen; interpreting the artifacts that we've held in storage. The building committee has done its job, and now the exhibit committee can work their magic. Thanks to Nichole Trushell, the window fund raising drive is a success with seven windows and four doors being "sold". Window donor plaques should be in place by Labor Day. The improvements to the museum grow daily. Its interior and exterior have been renovated in keeping with its historic look and quality. We are looking forward to the upcoming "Renovation Celebration" of the museum on August 31st. Come help us celebrate the renovation of YOUR museum!

Steve Dobrott



Guajolotes, Zopilotes y Paisanos
is the quarterly newsletter of the:

Hillsboro Historical Society

P. O. Box 461, Hillsboro, New Mexico, 88042

hillsboronmhistory.info

The mission of Hillsboro Historical Society is to preserve, collect, and protect the history of Hillsboro, Kingston and the surrounding area. We are an all-volunteer, non-profit organization. All donations are tax deductible.

Board of Directors

President: Steve Dobrott

Vice President: Nichole Trushell

Treasurer: Joe Ficklin

Secretary: Sandy Ficklin

Directors: Garland Bills, Harley Shaw, Leah Tookey, Penny McCauley, Steve Elam, Skip Bennett

Advisors: Karl Laumbach, Chris Adams, Craig Springer, R. D. Brinkley, Patricia Woodruff, Mark Thompson, John Tittmann, Lynn Mullins, Margie Gibson, Sonja Franklin, Robbin Tuttle, Larry Cosper, Barbara Lovell.

Newsletter Editor: Harley Shaw

Working Committees

Museum construction: Garland Bills, Steve Morgan, and Steve Dobrott

Publications: Harley Shaw, Robert Barnes, and Garland Bills.

Courthouse Committee: Nichole Trushell, Steve Elam, Steve Morgan, Steve Dobrott.

Museum exhibits: Robbin Tuttle, Barbara Lovell, Garland Bills, Leah Tookey

Anyone who might want to serve on one of the committees, please contact any of our board members.

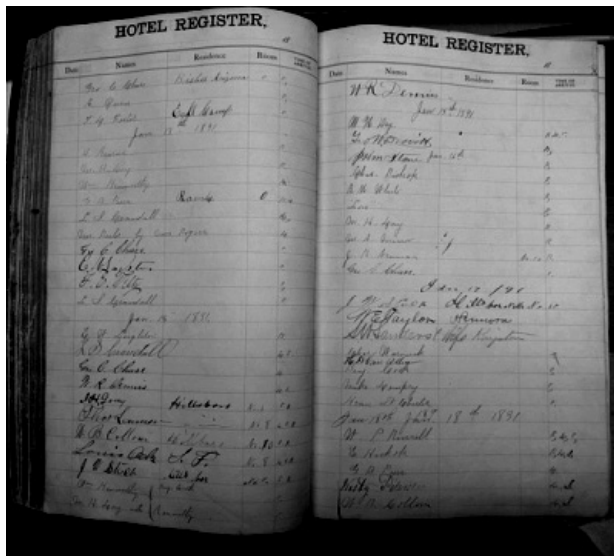
Hillsboro Historical Society News

IT'S A RENOVATION CELEBRATION AND YOU ARE INVITED!

The Black Range Museum is reopening! Mark your calendar, Labor Day weekend is the event you will not want to miss.

You will be amazed at the transformation of the beloved old museum building. Tireless attention to detail has created a rich museum experience. Too many to name, dedicated members and area residents poured their hearts into the effort. The blood, sweat and tears of so many has made the museum a destination that will draw people to Hillsboro for many years to come.

We look forward to seeing you there.... Labor Day weekend 8-31, 9-1, 9-2. Special events Saturday 9AM-4PM



Ledger from Hermosa Hotel. An exciting addition to the HHS collections came unexpectedly from the Arizona Historical Society in Tucson. An email from Patricia Norman of that Society said that among artifacts in their collection was an old hotel ledger from Hermosa covering 1888-1898. This did not represent their area of interest, and wondered if HHS would like to have it. The answer was a resounding yes, and we arranged for Lisa Haynes, a new land owner in Hillsboro to pick it up and deliver it. We've barely had time to browse rapidly through it, but it contains records that might keep a researcher busy for years.

One Man's Trash.....Recently, while installing the new windows at the Black Range Museum, workers discovered a plethora of old papers that had been stuffed in the walls years ago, undoubtedly for insulation. Members of the historical society were excited to know

what types of documents were included in the "collection" so I spent a few hours on Sunday sorting through the crumbling and dirty papers. It was clear from the start that the papers were all from the fall of 1883, so we know that the original windows were installed sometime in late 1883 or early 1884 because the documents were not something that would have been saved or held onto for more than a short time. Many of the items were simply old newspapers that were twisted and stuffed into the space--most of them were from Eastern Cities like New York. There was only one local paper: the Kingston Tribune. Many of them were too dirty and decayed to be readable. There were several old envelopes for registered mail, but they were empty. There were envelopes that did contain documents. Several of these held advertising items like product lists, sales bills, and small catalogues. The most interesting items for me were the personal notes that were both loose and in envelopes. There was a large poster from Harper Publishing that was in very good condition that advertised several publications. There were a couple small full-color magazines, one of which was in good enough condition to save. There were also several post cards, but most of them were nearly illegible. Most of the items that were removed from the walls, because they had been there for more than 130 years, were beyond saving. They were covered in fine dirt, spider egg webs, and other unidentifiable material. The thing that strikes me about this "collection" is that to us, history buffs in the 21st century, the items were exciting, mysterious, and "collectable," but to the folks who stuffed them into the walls so many years ago, they were just trash.

Leah F. Tookey
HHS Board Member
Curator of History
New Mexico Farm and Ranch Heritage Museum

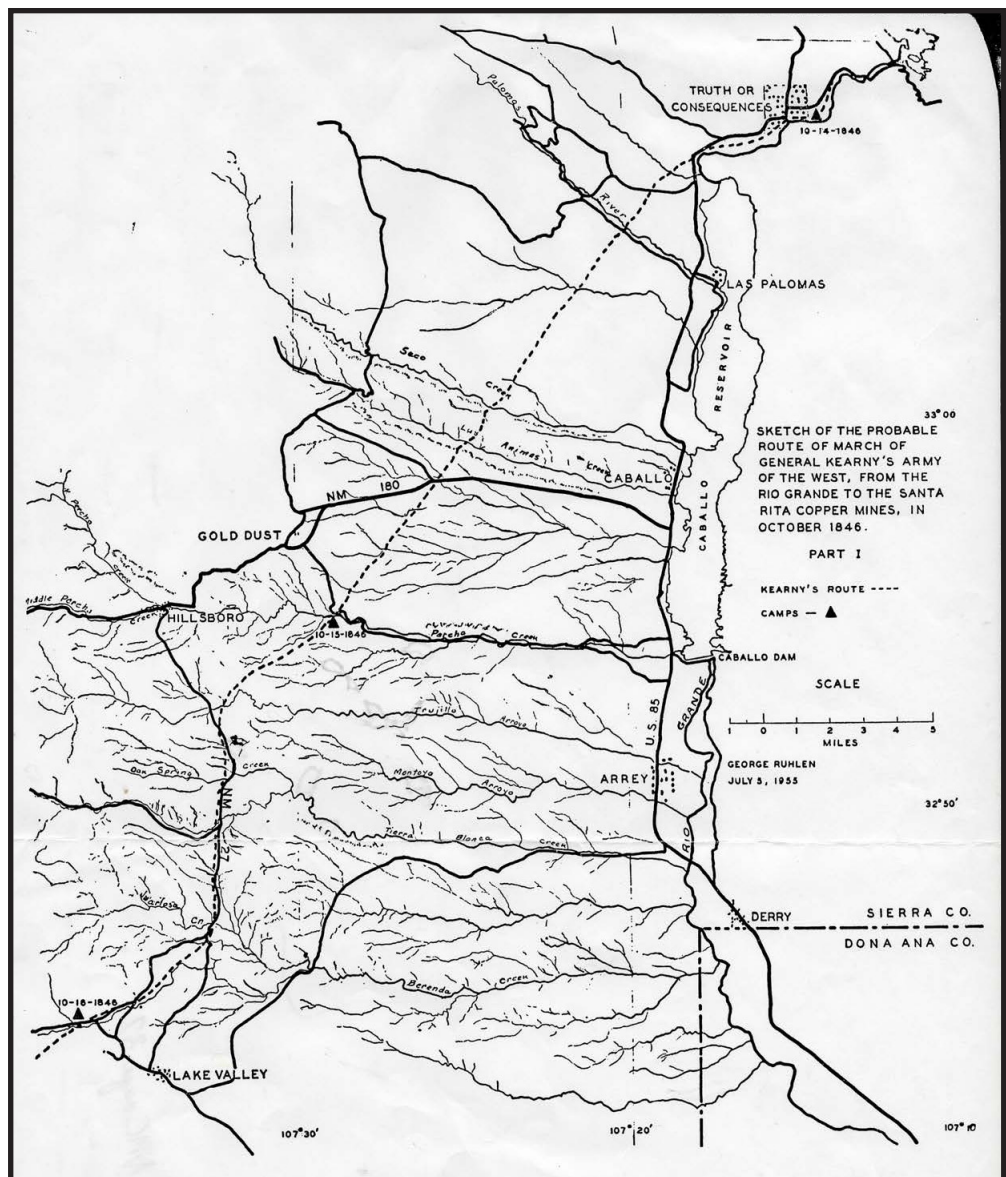
Crossing the Southern Black Range through the Centuries

Harley Shaw

Leaving the Rio Grande and crossing the south end of the Black Range isn't easy, even today. In a modern sedan, you have only one shot—State Highway 152 over so-called Emory Pass. As noted in an earlier article in this newsletter, even Emory didn't go that way, nor did hardly anyone else until 1935, when motorized earth moving equipment pushed a two-lane dirt road over, connecting Hot Springs with Silver City via Hillsboro and Kingston. Before that, most wheeled vehicles—wagons, stage-coaches, and early autos—went around the south end of Cooke's Peak, as did the railroad. And today, in spite of the well-maintained paved road through the pass, most folks choose to go around the south end of the mountain when weather is bad. In a modern car on pavement, this might add a half hour to the trip from Hot Springs (T or C) to Silver City, so nobody complains.

Prior to World War One, horseback or foot travelers had limited options, unless they lived and worked on the mountain and knew unmarked trails. No doubt, the Apaches knew faint trails that crossed in many places, but the Apaches were, in themselves, a factor that made travelers choosy about routes. Thick brush and deep canyons were great ambush sites. Known and usable thoroughfares were no more abundant than they are today, and passing from the Rio Grande to the Mimbres was probably a multi-day endeavor, regardless of

the route you chose. The big factor, one we forget nowadays, was water. Horses and humans needed to drink, and you couldn't carry enough along to quench a pack string or a company of troops, much less both. Once you left the Rio Grande, your route was constrained by the location of ephemeral streams or springs, preferably big ones, which were scarce in the Southwest. Today, I-25 zaps south criss-crossing the Rio Grande, State Highway 26 connects Hatch and Deming at 65 mph, so loop-



Probable route of eastern section of Gila Cutoff (Ruhlen, G. 1957 Kearny's route from the Rio Grande to the Gila River. N. M. Hist. Review 32 (3):213-230).

ing south around the mountain is no big deal. I-10 makes a fairly straight shot across seemingly flat desert from El Paso to Deming to Tucson, but trying such a route prior to the 20th Century, even in the winter, courted death for livestock and men. What now feels flat in a 300 horsepower vehicle was laborious and tedious afoot or horseback, crossing hundreds of sandy desert washes and ridges.

Historians studying the pre-1900 trails describe two early routes from the Rio Grande through New Mexico Territory (which then included Arizona) to California: the South Trail; and The Gila Cutoff. Anyone headed south from Santa Fe or Albuquerque had two approaches to the South Trail: they could leave the Rio Grande at Paraje, some 50 miles south of Socorro and make the risky crossing of the Jornada del Muerto to Rincon, then turn west; or they could continue down the river, struggling with canyons, crossings, and quick sand, to a point near current day Hatch, then swing SW to Cooke's Spring to join the old trail from El Paso. The river route was impassable for wagons, making the Jornada the only practicable wagon road. But it involved a loop to the east that added at least two days before travelers by wagon could turn west.

Horseback or Shank's mare travelers could take the rougher and obscure Gila Cutoff. Those coming from the north could leave the Rio Grande near the present-day site of Truth or Consequences and pass southwest across the lower reaches of Palomas, Seco, Animas, and Percha Creeks. They would hit Berrenda Creek in the vicinity of the point Highway 27 now crosses it and turn up that creek for several miles, leaving it before entering the steeper slopes of the mountain, crossing Macho Creek and passing up Pollock Creek to cross the low pass near the head of a tributary of Gavilan. From that point, they passed by the Copper Mines and headed down the Gila River. This route was probably used by the early Mimbrenos, by Spanish troops riding from Janos in search of Apaches, and by Fremont, Kearny and Emory, and Goulding, as well as Stitzel and Dugan when they wandered over the mountain in 1879 to discover the Bountiful and Rattlesnake mines, essentially creating Hillsboro. Of these, Goulding* noted that the trail had the appearance of being an ancient and well-worn. For early Anglos headed to California, it by-passed Tucson and

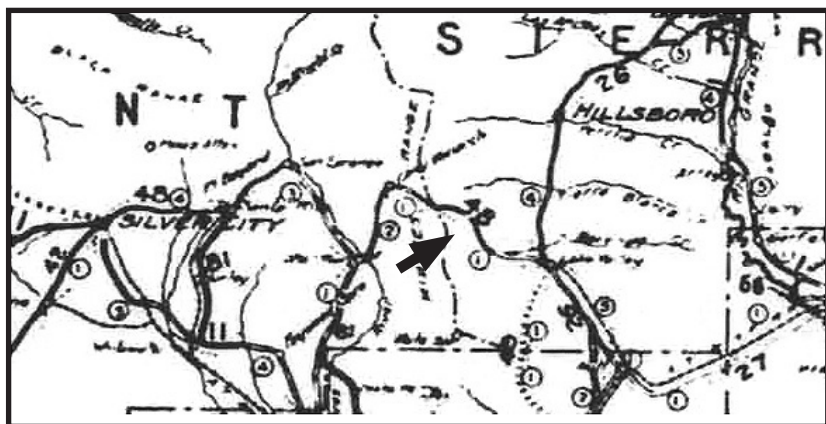


Section of 1918 State Highway Engineer showing the old state road 48 (arrow) connecting Lake Valley with the Mimbres Valley via Berrenda Creek and what is now the Royal John Mine Road.

went straight to the villages of the friendly Pima Indians. From there, it joined the South Trail, following the lower Gila River to the Colorado. The leg of the Gila Cutoff that crossed the Black Range also gave horsemen coming from the north a shorter option to reach the South Trail; they needed only to turn southwest when they hit the Mimbres and catch the trail east of present day Lordsburg. The Gila Cutoff, throughout most of its length, was too rough for wheeled vehicles.

As early as 1918, official highway maps were showing another route across the crest of the Black Range. This one followed the main tributary of Berrenda Creek to the summit, then descended past the Monarch Mine, later to be known as the Royal John Mine. The history of this road is unclear and worthy of additional research. On the 1900 State Highway Engineer's map, it appears in red, seemingly overlaying the actual printed map and possibly having been drawn in at some later time. On our digitized copy of the State Engineer's map for 1912, the road is missing. On the 1918, and 1920 maps, the road is definitely present, with the designation of State Road 48. It is an ungraded earth highway. A line drawn in on this map loops south and apparently represents one of the proposed routes for the Dam to Dam highway. On the 1923, it shows as an improved road, although the various classes are difficult to distinguish. It also shows on a 1925 tourist map. By 1927, it has disappeared from the State Engineer's map and the beginnings of pushing a highway through Emory Pass to Kingston and Hillsboro show instead. The road is also missing on the 1930 map, and the progress of the push toward Emory Pass again shown. In all the literature we've read, we find no definite story of anyone crossing it, although one source suggests that the Monarch Mine (now Royal John) received its mail

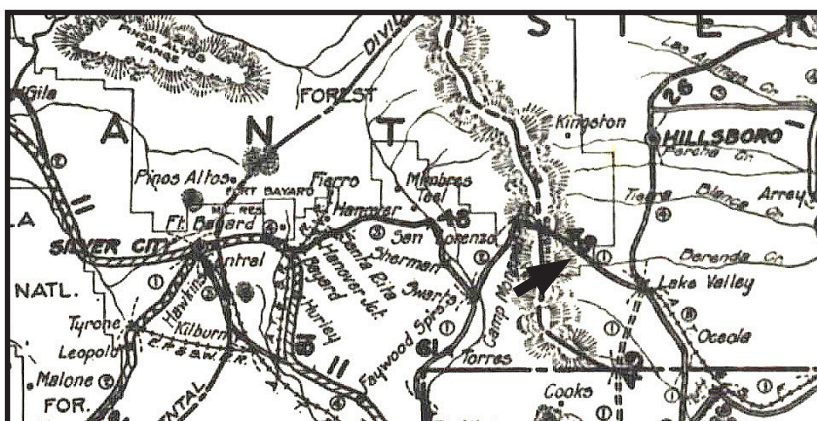
* Goulding, W. R. 2009. *California Odyssey: and overland journey on the Southern Trails, 1849*. Univ. Okla. Press, Norman.



1920

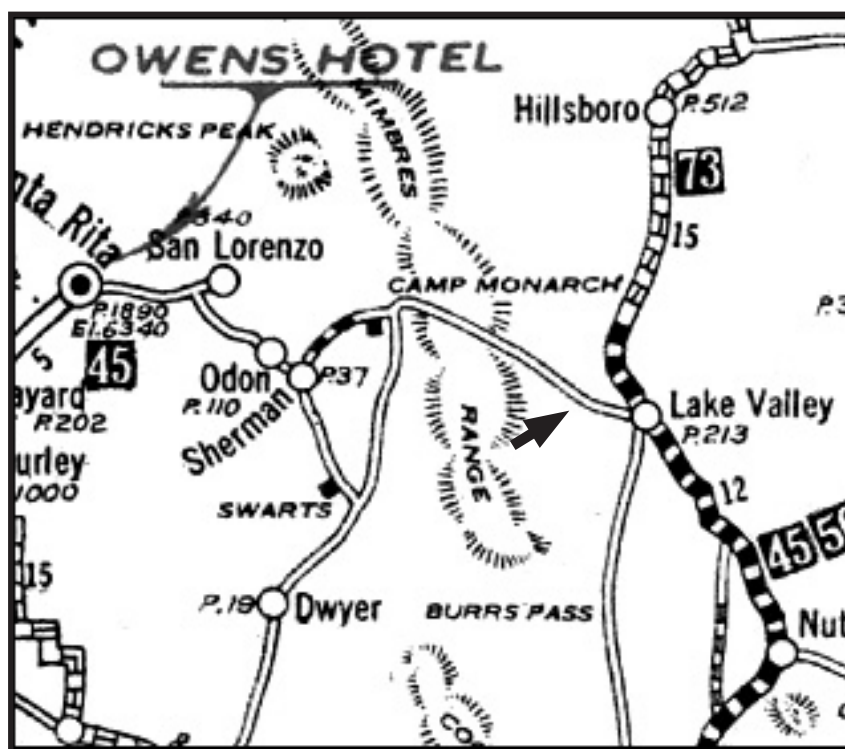
via the Lake Valley postoffice. Hillsboro resident Lonnie Rubio says his father remembered the road and that the two of them tried to drive it with an ATV in 1973. By then it was so washed out and grown over that they couldn't follow it up Berrenda Creek and across the summit. Lonnie's father also told him that when he hauled a wagon load of produce from the Rio Grande to the Mimbres Valley, he headed southwest and picked up a wagon road that went south of the Black Range. This was probably the Butterfield Trail that passed by Cooke's Spring.

Shortly after World War I, two de-



1923

velopments apparently led boosters to dream of a third route across the south Black Range. First, Elephant Butte and Roosevelt Dams had been completed. Such engineering feats are taken for granted in our times, but they were marvels of accomplishment in 1920. Second, by 1920, the automobile was becoming reliable enough for more adventurous souls to indulge a new hobby—touring. The Indians had been subdued for 30 years and the auto rendered travel available to individuals, independent of railroads or without the need of horses. With a can of extra gas and a couple jugs of water auto routes



1925

increased the daily range of travelers and allowed direct routes between towns, independent of springs. Boosters in places like Hot Springs and Silver City saw an opportunity to attract new dollars.

I don't know who proposed the idea or came up with the phrase, but for a short time around 1921, the concept of a Dam to Dam Highway—a tourist route between Elephant Butte Dam in New Mexico and Roosevelt Dam in Arizona caught on.

The idea advanced to the point that a large highway dedication ceremony happened somewhere on Berrenda Creek on July 4, 1921, we're not sure where, but a panoramic photo of the gathering exists. The planned route, insofar as we've determined, ran southwest out of Hot Springs, probably more or less following the old Gila Cutoff route across Palomas, Seco, and Animas Creeks. It diverted



1927

westward to Hillsboro, which was then in its heyday as the Sierra County Seat; and businessmen in Hillsboro were almost certainly among the main proponents of the route. An overnigher in Hillsboro and stocking up on gas, water, and food was potentially in the travelers' plans. The highway then headed south, more or less along the route of current Highway 27. At this point the route, and its purpose, become uncertain, even confusing. For some time, in researching the highway, I had assumed it probably followed the old Gila Cutoff across the Black Range. However, the roughness of this route made it no more suitable for automobiles, perhaps even less so, than it had been for wagons. It was a horse trail. The road went elsewhere. An early State Highway Engineer's report noted that the route might go by way of Mule Springs, near the first low saddle north of Cooke's Peak and near the old mining townsite of Cooke. This is shown on the 1925 map as Burr's Pass, but no road is apparent. Why this route was promoted, rather than the better-known

Butterfield trail through Cooke's Spring is unknown. Another option was certainly the rough road up Berrenda Creek down the west side through Camp Monarch, ergo over what is now the Royal John Mine road. Perhaps both the Berrenda and Mule Springs routes were considered.

Both routes spurned Deming, which would have seemed a natural place for a stopover. They did cut some miles off of the road distance between Elephant Butte and Silver City, and certainly passed fine scenery and at least one point of interest in the form of the town of Cooke, but both had to be rougher than the road around the south end of the range might have been. A lot of room for research remains.

Stories vary regarding why the idea died. One says that a serious thunderstorm eradicated the road through the pass at Mule Springs or the Berrenda Road, or both, shortly after the dedication, so it was never used. Another thought is that the average driver decided that the route around the south end of the mountain, perhaps with a stop in Deming made more sense, so the route just faded from misuse. Whatever the case, the idea of the Dam to Dam Highway apparently



1930

didn't take. If races or other such booster events were planned, we've found no record so far of their happening. Seemingly, the idea was just a splash that didn't catch the tourist's fancy. By 1927, road builders were headed for Emory Pass. If the Dam to Dam moniker was ever applied to this newer route, we've yet to find it in print.

But the Dam to Dam highway became real, if unnamed. With a minor, and much more sensational, exception, the route as planned exists today, though nobody that I know specifically plans a Dam to Dam drive. The big change in the original route is present Highway 152 through Hillsboro and Kingston and across the Black Range to the Copper Mines and Silver City. Pushing a road over Emory Pass was probably hard to imagine before 1921, but became feasible by 1934. Considering that only 13 years had passed, perhaps the ghost of Dam to Dam nudged the construction of this route—infinately more scenic than the rough road by way of Mule Spring.

Whatever the case, once travelers heading into Silver City pass the junction of Highways 152 and

61, they are on the proposed Dam to Dam route. In concept, it crossed the Gila River and headed north to Mule Creek Pass, thence past Clifton, to Safford, across the San Carlos Reservation, turning northerly at Globe and down the long hill to the Salt River and Roosevelt Dam.

Roosevelt Dam has been heightened since its original construction, and a striking new bridge crosses the lake just above the dam, replacing the old narrow passageway that crossed atop the dam itself. Patty and I drive parts of the Dam to Dam highway on most of our trips to see family, either in Chino Valley or to the town of Oracle. We prefer its scenery and lack of traffic to the flat terrain crossed by I-10 and the heavy traffic of Tucson and Phoenix.

I spent a chunk of my career working near Roosevelt Dam and frequently drove back and forth along the old highway crossing Roosevelt Dam. For various reasons, I've driven segments of that old "Dam to Dam" highway much of my life, oblivious to name or the dreams of those early boosters.



A high-quality print of this photograph, some 4 feet in length, is in the archives of the Black Range Museum. It is labeled "Picnic, Celebrating opening of Black Range Dam to Dam Scenic Highway, Berrenda [sic] Canyon, N.M., July 4th, 1921." It was created by the Almeron Newman photograph company in Deming, N. M. A very rough "quick and dirty" count came up with 205 people in the photo. Interestingly, Deming newspapers articles of the time strongly opposed the road, because as conceived, it would bypass Deming. Lonnie Rubio of Hillsboro relates that his father said the planned road went up Berrenda Creek, but it was destroyed by a major storm and never repaired.

Hillsboro Historical Society board meetings are on the second Sunday of each month at 2PM at the Black Range Museum. HHS members are encouraged to attend.

Baseball and Civil Law in early Hillsboro—Judge, Jury, and Umpire

Lynn Tittmann Mullins



Postcard labeled Sierra Browns about 1909

Growing up in Hillsboro, New Mexico, my father, John Tittmann, began his lifelong love of baseball. That didn't happen as it does for most boys (and girls) today--joining a Little League team with uniforms, a coach, practices, and frequently mowed grassy fields. To begin with there was no grass in Hillsboro, so those interested in playing baseball had to find some level rangeland, clear away the rocks and other debris, chase off the cows, and set up their "field." Truly sandlot baseball—with the sand blowing by! But Hillsboro had an adult team as early as 1909—the Browns, later the Grays—so Dad was exposed to the game as a child. Perhaps his interest in playing began as he watched "his" hometown team.

In 1921, when my Dad entered the 9th grade, his parents sent him to join his brother at Storm King School in upstate New York. The school was in the hills above the west bank of the Hudson River, just north of West Point. This new environment must have been quite a shock to a boy from the arid Southwest. Dad had never seen such trees; in the fall, the colors were many and beautiful. And the baseball field had **grass**! His brother later confessed how embarrassed he was when he found Dad with his

shoes and socks off, walking barefoot on the grass. But for a boy who had never seen a grassy athletic field, what a wonderful new experience.

While at boarding school, Dad discovered his athletic abilities. He participated in every sport he could: football, where his front teeth were loosened, much to the concern of his parents; ice hockey, for which he had to learn to ice skate; tennis; and, of course, baseball. Dad did not neglect his studies and in 1925 graduated with honors. On his final report card the headmaster wrote the following testament:

"Graduated at the head of his class, head boy of the upper school; winner of the Storm King cup: voted by boys and masters as the boy who has represented most nearly the ideals of the school; tennis champion; and winner of the cup to the boy who has contributed most to the success of the baseball team. (the best team we've had in ten years). One of the finest boys that the school has graduated in years."

Not bad for a boy from Hillsboro!

A poem, "Ave," in Dad's commencement book recognizes his athletic talents and also shows how much he was liked by his classmate.

Hail, Johnno Tittmann,
Tennis and mittman,
Likewise punditman
Wit man
Fit man
You never quit, man
You had the grit, man
You made the hit, man
You are the it, man
You, every bit man,
Old Johnno Tittmann.



Hillsboro baseball team about 1931.

In college, Dad became the star player on the varsity baseball team. He returned to Hillsboro each summer, and I imagine him organizing baseball games with his friends and sharing the skills he had honed. The town's residents might have supposed that Dad was on his way to a career in baseball, and I believe he would have loved that. But a few months after he graduated from college, in 1929, the economy crashed. He had earned an academic scholarship to Harvard Law School; and his father, Edward, was a second-generation lawyer; given the times, that path seemed the best one to pursue.

There were no sports at law school, so Dad spent his summers in Hillsboro, playing baseball with the local team. Many of the young men on the team were childhood friends. They had grown up playing baseball together; what could be better than to continue doing something that was so much fun?

At the time, Hillsboro's baseball field was on the mesa to the south of the town, in area that was as level

and free of rocks as the players could manage. Remains of the old backstop still stand up there, and you can find large piles of rocks around the periphery of the field, undoubtedly carried there by the players trying to develop a smooth playing surface. I suspect that even at its best, the surface of that field caused many a wayward hop of grounders. There were no stands, so many spectators parked their cars around the field and sat in them to watch the games.

Though baseball was one of Dad's great passions, he had discovered that the law was intellectually challenging. Perhaps his class with Felix Frankfurter, the future Supreme Court justice who became his mentor in law school, made him realize he had the mind to become a competent attorney. Baseball and the law became his two great passions. At least once in Hillsboro the two came together. After completing law school, Dad returned home and rejoined the town baseball team, serving as catcher and manager. One day my grandfather asked Dad to represent him and file a suit on his behalf to collect a debt. This would give his son a bit of courtroom experience; and probably my grandfather also wanted him to think about finding a job.



Hillsboro baseball team, date unknown. John Tittmann is in back row, wearing manager's jacket.

The court case was a minor one—a dispute about a debt of \$50. The defendant, a Hispanic attorney from El Paso, requested a jury trial, feeling sure that any jury in Hillsboro would be mostly Hispanics. The plaintiff was my grandfather, an Anglo. Then as now, people played on ethnic differences and the El Paso attorney was sure that the jury of his peers could be convinced to take his

side in the dispute. Nonetheless, Dad was as ready as he could be on the day of the trial.

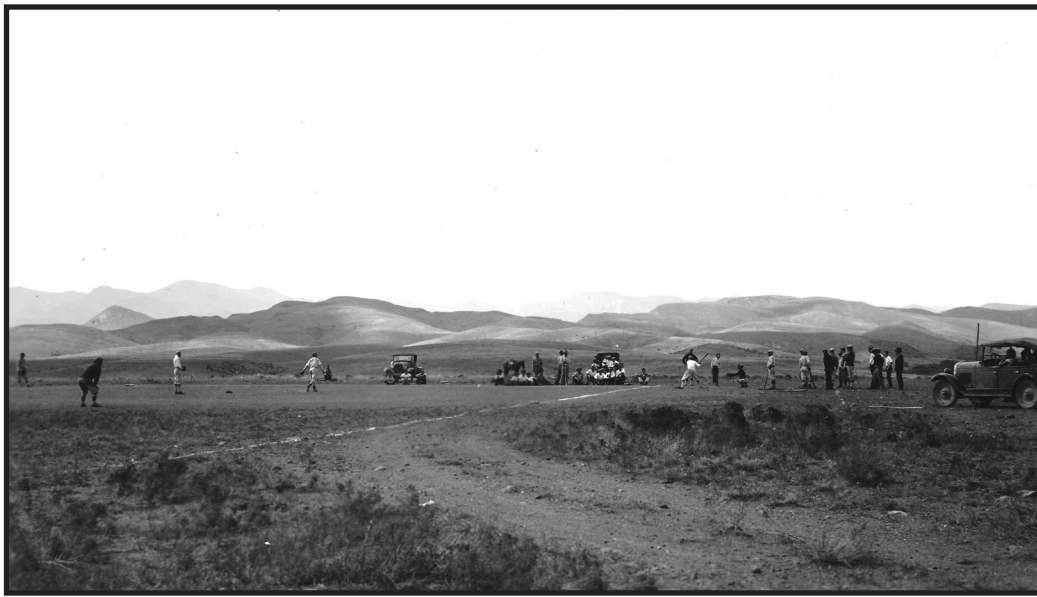
Before court was called to order, the judge asked his bailiff to obtain a jury. At that time, in the very small town of Hillsboro, juries, when needed, were picked up off the street. The bailiff left the courtroom and returned shortly with the designated number of men. Dad presented the best case he could. After the opposing attorney presented his own case, Dad had doubted his chances of success, but when he saw the jury that the judge accepted, he felt more optimistic.

The jury was excused to deliberate. To everyone's surprise, particularly the El Paso Attorney, the jury returned shortly with a unanimous verdict for Dad's client, his own father.

Much later in his law career, Dad revealed what had happened. The judge did not know that his bailiff was the first baseman on the Hillsboro baseball team.

When the bailiff went in search of a jury, he quickly returned with several of the team members. Since they had an important game that afternoon, the bailiff might have felt that this was the best way to finish the proceedings on time. Whatever the bailiff's reasoning, the effect was a quick verdict that neutralized the defendant's advantage due to his ethnicity.

I heard my father use this story frequently in lectures to young lawyers to point out the importance of knowing their jury. He was not advocating packing a jury the way the bailiff had, but trying to help them see that finding the right jury is an important part of preparing a case. In the last 75 years jury selection has become an important skill, and many people make a career of helping lawyers screen potential jurors. If only they could have a baseball team in their corner, the way a young Hillsboro lawyer did in 1932.



Baseball on the mesa south of town. Remains of this old ball diamond are still visible.

Kingston Antiques & Art

Located on Highway 152 at the entrance to Kingston, we will host our 1st Anniversary celebration on August 24 from 10 am to 4 pm. The store highlights the works of four local artists, and carries a variety of rare and unusual antiques and unique books on New Mexico History. Throughout the day you will meet local authors who will be signing their books on New Mexico madams and hauntings, enjoy cold refreshments, and discover some special discounts and offers in the store. Come celebrate with us. Mark the date to visit us and enjoy.

For more information call 575 895-5501

HILLSBORO HISTORICAL SOCIETY

Membership Application

The Hillsboro Historical Society is an all-volunteer 501(c)3 non-profit organization whose mission is to preserve, collect, and protect the history of the Hillsboro, Kingston, and Lake Valley region. Memberships are on a calendar year basis (January 1 to December 31). Dues are \$25 annually for individual or family. All contributions are tax-deductible.



Name: _____

Date: _____

Address: _____

Phone: _____ Email: _____

(a) Individual or family membership \$25 \$ _____

How would you like to receive our newsletter? _____ email _____ regular mail
(We prefer to send by email.)

(b) Gift membership(s) at \$25 each \$ _____

Please provide name, address, and email address for each person:

(c) Additional donation

For general operations \$ _____

For the Black Range Museum \$ _____

For the Hillsboro courthouse and jail site \$ _____

TOTAL CONTRIBUTION ... \$ _____

Please mail this completed Membership Form along with a check for your Total Contribution made payable to Hillsboro Historical Society to the following address:

Hillsboro Historical Society
P. O. Box 461
Hillsboro, NM 88042